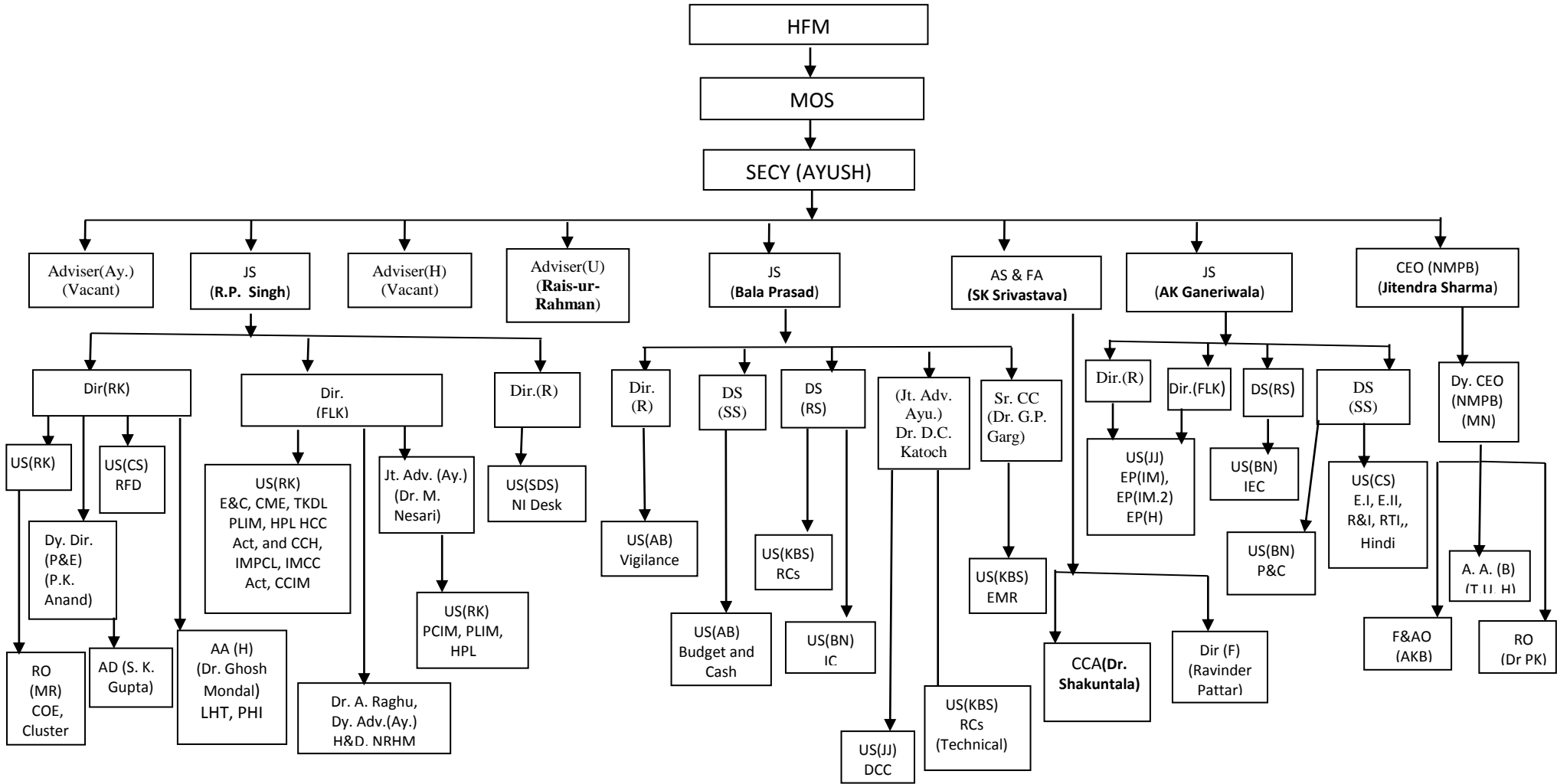


ORGANISATION CHART
DEPARTMENT OF AYUSH



Abbreviations:-

1. HFM – Health & Family Welfare Minister
2. MOS – Minister of State
3. Secy. – Secretary
4. JS – Joint Secretary
5. Adv. (U.) – Adviser (Unani)
6. Adv. (Ay.) – Adviser (Ayurveda)
7. AS & FA – Additional Secretary and Financial Advisor
8. CEO – Chief Executive Officer
9. Dir. – Director
10. NMPB – National Medicinal Plants Board
11. DS – Deputy Secretary
12. CCA – Chief Controller of Accounts
13. F & A O – Finance Administrative officer
14. Sr. C.C. – Senior Chief Chemist
15. Jt. Adv.(Ayu) – Joint Adviser (Ayurveda)
16. Dy. Adv. (U) – Deputy Adviser (Unani)
17. Dy. Adv.(H) – Deputy Adviser (Homoeopathy)
18. US – Under Secretary
19. Dy. Dir.(OL) – Deputy Director (Official Language)
20. Dy. Dir.(P&E) – Deputy Director (Planning and Evaluation)
21. A.D.(P&E)-Assistant Director (Planning and Evaluation)
22. A.A. (Ay.) – Assistant Adviser (Ayurveda)
23. A.A.(U) – Assistant Adviser (Unani)
24. A.A. (H) – Assistant Adviser (Homoeopathy)
25. A.A. (B) – Assistant Botany
26. R.O (Ay.) – Research Officer (Ayurveda)
27. R.O (H) – Research Officer (Homoeopathy)
28. A.A.(B) – Assistant Adviser (Botany)
29. PLIM – Pharmacopoeia Laboratory of Indian Medicine
30. HPL – Homoeopathic Pharmacopoeia Laboratory
31. PCIM – Pharmacopoeia Commission of Indian Medicine
32. EMR – Extra Mural Research
33. CCIM – Central Council of Indian Medicine
34. CCH – Central Council of Homoeopathy
35. PHI – Public Health Initiatives
36. COE – Centre of Excellence
37. EP- Homoeo – Education Policy (Homeopathy)
38. NI Desk – National Institute Desk
39. EP (IM) – Education Policy (Indian Medicine)
40. EP (IM-2) – Education Policy (Indian Medicine – 2)
41. IMPCL – Indian Medicines Pharmaceuticals Corporation Ltd.
42. P&E – Planning and Evaluation
43. H&D – Hospital and Dispensary
44. E&C – Education and Co-operation
45. Estt.I – Establishment. I
46. Estt. II – Establishment. I
47. Estt. III – Establishment.III
48. Gen. Admn. – General Administration
49. RTI – Right to Information
50. R & I – Receipt and Issue
51. P&C – Parliament and Co-ordination
52. DCC – Drug Control Cell
53. RC – Research Cell
54. NRHM- National Rural Health Mission
55. IEC – Information Education and Communication
56. IC – International Co-operation
57. CME – Continuing Medical Education
58. RFD – Result Framework Document
59. LHT – Local Health Traditions
60. TKDL - Traditional Knowledge Digital Library