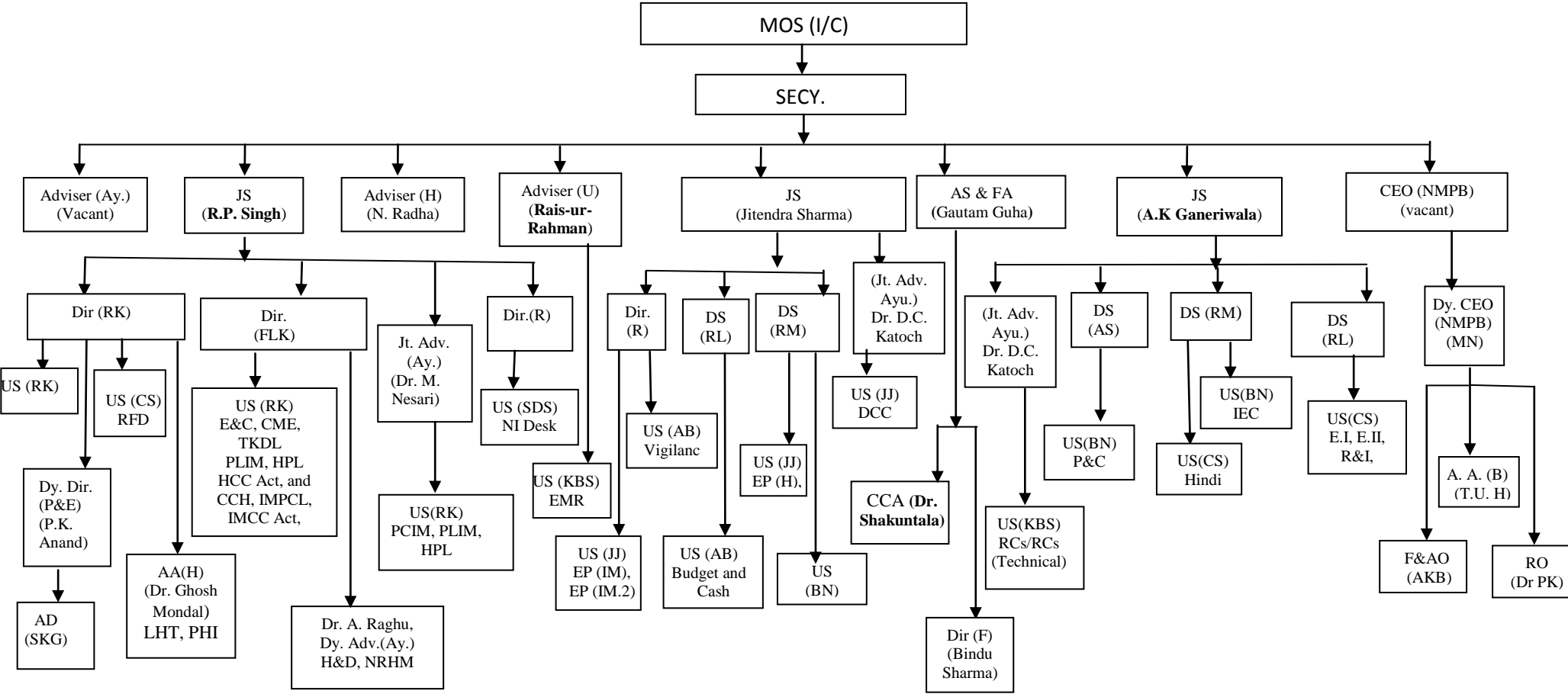


# ORGANIZATION CHART

(As on 21.11.2014)

## MINISTRY OF AYUSH



# **ORGANIZATION CHART**

(As on 21.11.2014)

## **Abbreviations:-**

MOS(IC) – Minister of State (Independent Charge)

Secy. – Secretary

JS – Joint Secretary

Ay. – Ayurveda

U-Unani

H-Homoeopathy

AS & FA – Additional Secretary and Financial Advisor

CEO – Chief Executive Officer

Dy. CEO- Deputy Chief Executive Officer

NMPB – National Medicinal Plants Board

DS – Deputy Secretary

Sr. C.C. – Senior Chief Chemist

Dir.(F)-Director(Finance)

Dir. - Director

Jt/ Adv. (Ay.) – Joint Adviser (Ayurveda)

US – Under Secretary

Dy. Dir.(OL) – Deputy Director (Official Language)

Dy. Dir.(P&E) – Deputy Director (Planning and Evaluation)

CCA – Chief Controller of Accounts

Dy. Adv.(H) – Deputy Adviser (Homoeopathy)

Dy.Adv.(Ay.) – Deputy Adviser (Ayurveda)

Dy..Adv.(U) – Deputy Adviser (Unani)

R.O (Ay.) – Research Officer (Ayurveda)

R.O (H) – Research Officer (Homoeopathy)

R.O – Research Officer

A.A.(B) – Assistant Adviser (Botany)

PLIM – Pharmacopoeia Laboratory of Indian Medicine

AD-Assistant Director

HPL – Homoeopathic Pharmacopoeia Laboratory

PCIM – Pharmacopoeia Commission of Indian Medicine

EMR – Extra Mural Research

CCIM – Central Council of Indian Medicine

CCH – Central Council of Homoeopathy

PHI – Public Health Initiatives

COE–Centre of Excellence

EP-Homoeo – Education Policy (Homeopathy)

NI Desk – National Institute Desk

EP (IM) – Education Policy (Indian Medicine)

EP (IM-2) – Education Policy (Indian Medicine – 2)

IMPCL – Indian Medicines Pharmaceuticals Corporation Ltd.

H&D – Hospital and Dispensary

E&C –Education and Co-operation

Estt.III – Establishment.III

Estt.I – Establishment.I

Estt.II – Establishment.II

Gen. Admn. – General Administration

IEC-Information Education Communication

P&C – Parliament and Co-ordination

P&E-Planning & Evaluation

DCC – Drug Control Cell

F –Finance

F&AO-Finance and Administrative Officer

LHT-Local Health Traditions

MP-Midwifery Practices

IMCC Act- Indian Medicine Central Council Act

IMPCL-Indian Medicines Pharmaceuticals Corporation Limited

NRHM-National Rural Health Mission

CME-Continuous Medical Education

GTP-Golden Triangle Partnership

IC-International Corporation

IPR-Intellectual Property Rights

EMR-Extra Mural Research

DCC-Drug Control Cell

RTI – Right to Information

R&I – Receipt and Issue

## **\*NI - NATIONAL INSTITUTES**

AIIA -ALL INDIA INSTITUTE OF AYURVEDA, New Delhi

NIA- NATIONAL INSTITUTE OF AYURVEDA

RAV-RASHTRIYA AYURVED VIDYAPEETH

IGPTRA-INSTITUTE OF POST GRADUATE TRAINING & RESEARCH IN AYURVEDA

NEIFM-NORTH EASTERN INSTITUTE OF FOLK MEDICINE

NEIAH-NORTH EASTERN INSTITUTE OF AYURVEDA AND HOMOEOPATHY

NIS-NATIONAL INSTITUTE OF SIDDHA

NIUM-NATIONAL INSTITUTE OF UNANI MEDICINE

NIH-NATIONALINSTITUTEOF HOMOEOPATHY

MDNIY-MORARJI DESAI NATIONAL INSTITUTE OFYOGA

NIN-NATIONAL INSTITUTE OF NATUROPATHY

## **\*\*RCS-RESEARCH COUNCILS**

CCRAS-CENTRAL COUNCIL FOR RESEARCH IN AYURVEDIC SCIENCES

CCRH-CENTRAL COUNCIL FOR RESEARCH IN HOMOEOPATHY

CCRUM-CENTRAL COUNCIL FOR RESEARCH IN UNANI MEDICINE

CCRYN-CENTRAL COUNCIL FOR RESEARCH IN YOGA & NATUROPATHY

CCRS-CENTRAL COUNCIL FOR RESEARCH IN SIDDHA