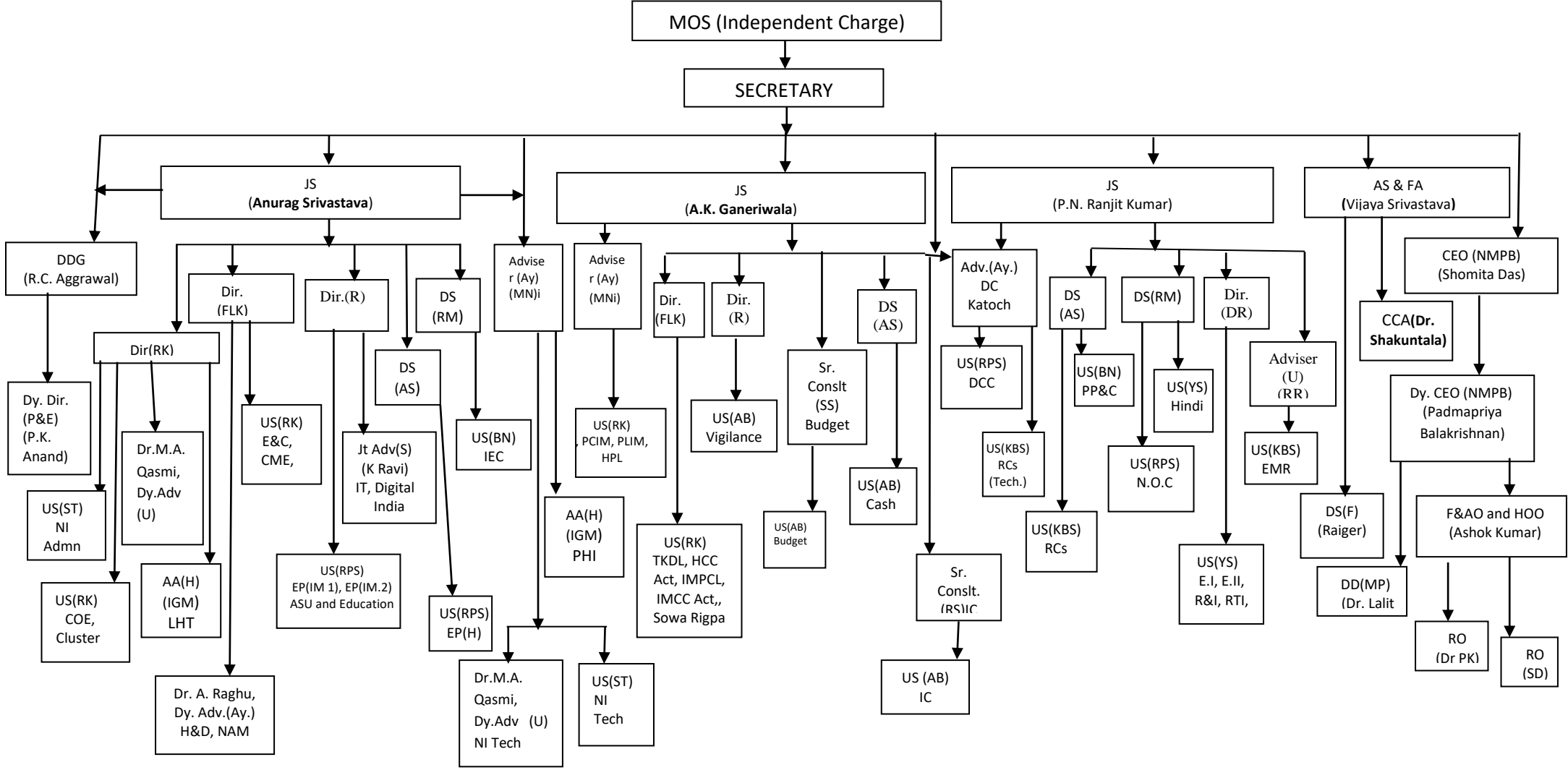


# ORGANIZATION CHART

## MINISTRY OF AYUSH



## 251 Abbreviations:-

MOS(IC) – Minister of State (Independent Charge)  
Secy. – Secretary  
JS – Joint Secretary  
Ay. – Ayurveda  
U-Unani  
H-Homoeopathy  
AS & FA – Additional Secretary and Financial Advisor  
CEO – Chief Executive Officer  
Dy. CEO- Deputy Chief Executive Officer  
NMPB – National Medicinal Plants Board  
DS – Deputy Secretary  
Sr. C.C. – Senior Chief Chemist  
Dir.(F)-Director(Finance)  
Dir. - Director  
Jt/ Adv. (Ay.) – Joint Adviser (Ayurveda)  
US – Under Secretary  
Dy. Dir.(OL) – Deputy Director (Official Language)  
Dy. Dir.(P&E) – Deputy Director (Planning and Evaluation)  
DD(MP)- Deputy Director (Medicinal Plants)  
CCA – Chief Controller of Accounts

Dy. Adv.(H) – Deputy Adviser (Homoeopathy)  
Dy.Adv.(Ay.) – Deputy Adviser (Ayurveda)  
Dy..Adv.(U) – Deputy Adviser (Unani)

R.O (Ay.) – Research Officer (Ayurveda)  
R.O (H) – Research Officer (Homoeopathy)  
R.O – Research Officer  
A.A.(B) – Assistant Adviser (Botany)

PLIM – Pharmacopoeia Laboratory of Indian Medicine  
AD-Assistant Director  
HPL – Homoeopathic Pharmacopoeia Laboratory  
PCIM – Pharmacopoeia Commission of Indian Medicine

EMR – Extra Mural Research  
CCIM – Central Council of Indian Medicine  
CCH – Central Council of Homoeopathy  
PHI – Public Health Initiatives  
COE–Centre of Excellence  
EP-Homoeo – Education Policy (Homeopathy)  
NI Desk – National Institute Desk  
EP (IM) – Education Policy (Indian Medicine)  
EP (IM-2) – Education Policy (Indian Medicine – 2)  
IMPCL – Indian Medicines Pharmaceuticals Corporation Ltd.  
H&D – Hospital and Dispensary  
E&C –Education and Co-operation  
Estt.III – Establishment.III  
Estt.I – Establishment.I  
Estt.II – Establishment.II  
Gen. Admn. – General Administration  
IEC-Information Education Communication  
Ministry of Statistics & Programme Implementation National Survey Office,Surevey Design & Research Division,  
NSSO, Mahalanobis Bhavan, 164, Gopal Lal Tagore , oad, Kolkata-700108 U8

P&C – Parliament and Co-ordination  
P&E-Planning & Evaluation  
DCC – Drug Control Cell  
F –Finance  
F&AO-Finance and Administrative Officer  
LHT-Local Health Traditions  
MP-Midwifery Practices  
IMCC Act- Indian Medicine Central Council Act  
IMPCL-Indian Medicines Pharmaceuticals Corporation Limited  
NRHM-National Rural Health Mission  
CME-Continuous Medical Education  
GTP-Golden Triangle Partnership  
IC-International Corporation  
IPR-Intellectual Property Rights  
EMR-Extra Mural Research  
DCC-Drug Control Cell  
RTI – Right to Information+  
R&I – Receipt and Issue  
N.O.C.- Nominations of Candidates

### \*NI - NATIONAL INSTITUTES

AIIA -ALL INDIA INSTITUTE OF AYURVEDA, New Delhi  
NIA- NATIONAL INSTITUTE OF AYURVEDA  
RAV-RASHTRIYA AYURVED VIDYAPEETH  
IGPTRA-INSTITUTE OF POST GRADUATE TRAINING & RESEARCH IN AYURVEDA  
NEIFM-NORTH EASTERN INSTITUTE OF FOLK MEDICINE  
NELAH-NORTH EASTERN INSTITUTE OF AYURVEDA AND HOMOEOPATHY  
NIS-NATIONAL INSTITUTE OF SIDDHA  
NIUM-NATIONAL INSTITUTE OF UNANI MEDICINE  
NIH-NATIONALINSTITUTE OF HOMOEOPATHY  
MDNIY-MORARJI DESAI NATIONAL INSTITUTE OF YOGA  
NIN-NATIONAL INSTITUTE OF NATUROPATHY

### \*\*RCS-RESEARCH COUNCILS

CCRAS-CENTRAL COUNCIL FOR RESEARCH IN AYURVEDIC SCIENCES  
CCRH-CENTRAL COUNCIL FOR RESEARCH IN HOMOEOPATHY  
CCRUM-CENTRAL COUNCIL FOR RESEARCH IN UNANI MEDICINE  
CCRYN-CENTRAL COUNCIL FOR RESEARCH IN YOGA & NATUROPATHY  
CCRS-CENTRAL COUNCIL FOR RESEARCH IN SIDDHA