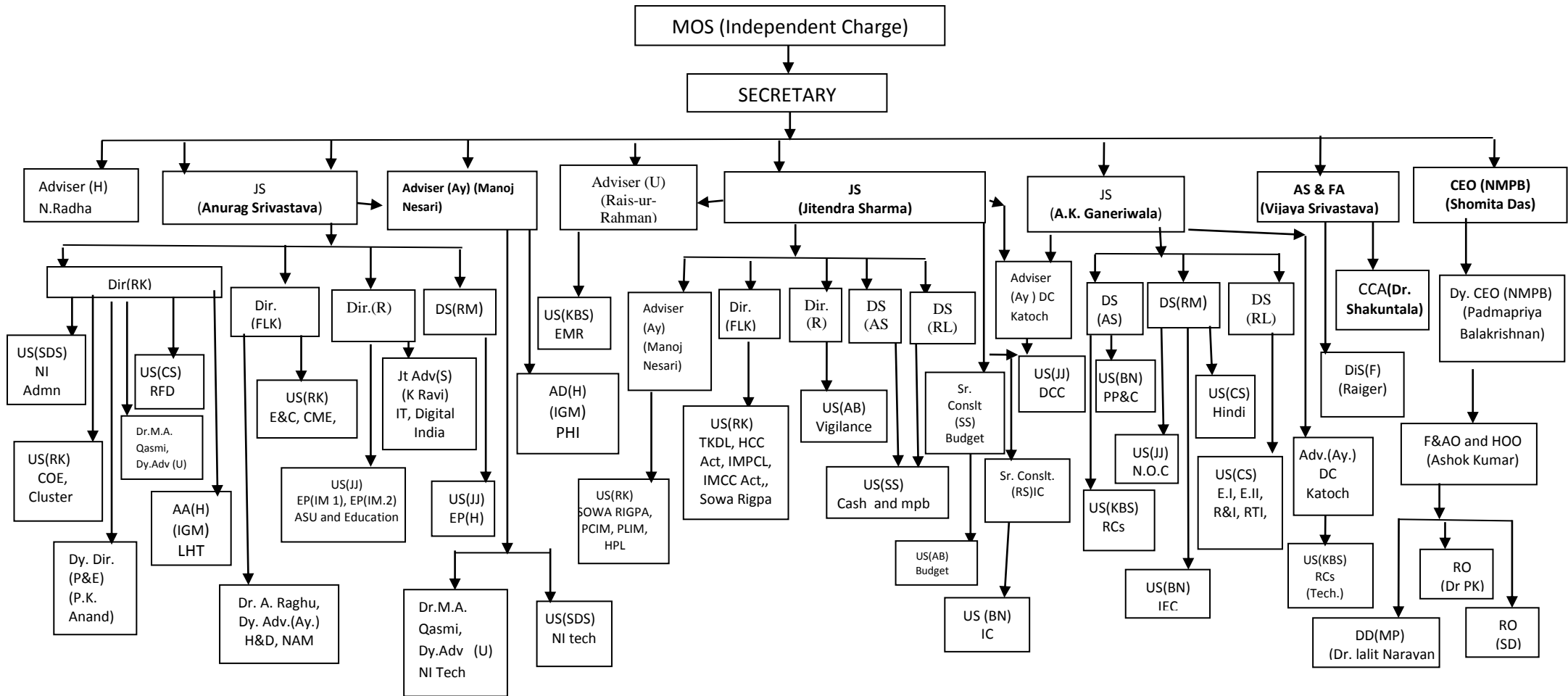


1ORGANIZATION CHART AS ON 20.11.2015

MINISTRY OF AYUSH



Abbreviations:-

MOS(IC) – Minister of State (Independent Charge)
Secy. – Secretary
JS – Joint Secretary
Ay. – Ayurveda
U-Unani
H-Homoeopathy
AS & FA – Additional Secretary and Financial Advisor
CEO – Chief Executive Officer
Dy. CEO- Deputy Chief Executive Officer
NMPB – National Medicinal Plants Board
DS – Deputy Secretary
Sr. C. C. – Senior Chief Chemist
Dir.(F)-Director(Finance)
Dir. - Director
Jt/ Adv. (Ay.) – Joint Adviser (Ayurveda)
US – Under Secretary
Dy. Dir.(OL) – Deputy Director (Official Language)
Dy. Dir.(P&E) – Deputy Director (Planning and Evaluation)
DD(MP)- Deputy Director (Medicinal Plants)
CCA – Chief Controller of Accounts

Dy. Adv.(H) – Deputy Adviser (Homoeopathy)
Dy. Adv.(Ay.) – Deputy Adviser (Ayurveda)
Dy..Adv.(U) – Deputy Adviser (Unani)

R.O (Ay.) – Research Officer (Ayurveda)
R.O (H) – Research Officer (Homoeopathy)
R.O – Research Officer
A.A.(B) – Assistant Adviser (Botany)

PLIM – Pharmacopoeia Laboratory of Indian Medicine
AD-Assistant Director
HPL – Homoeopathic Pharmacopoeia Laboratory
PCIM – Pharmacopoeia Commission of Indian Medicine

EMR – Extra Mural Research
CCIM – Central Council of Indian Medicine
CCH – Central Council of Homoeopathy
PHI – Public Health Initiatives
COE–Centre of Excellence
EP-Homoeo – Education Policy (Homeopathy)
NI Desk – National Institute Desk
EP (IM) – Education Policy (Indian Medicine)
EP (IM-2) – Education Policy (Indian Medicine – 2)
IMPCL – Indian Medicines Pharmaceuticals Corporation Ltd.
H&D – Hospital and Dispensary
E&C –Education and Co-operation
Estt.III – Establishment.III
Estt.I – Establishment.I
Estt.II – Establishment.II
Gen. Admn. – General Administration

P&C – Parliament and Co-ordination
P&E-Planning & Evaluation
DCC – Drug Control Cell
F –Finance
F&AO-Finance and Administrative Officer
LHT-Local Health Traditions
MP-Midwifery Practices
IMCC Act- Indian Medicine Central Council Act
IMPCL-Indian Medicines Pharmaceuticals Corporation Limited
NRHM-National Rural Health Mission
CME-Continuous Medical Education
GTP-Golden Triangle Partnership
IC-International Corporation
IPR-Intellectual Property Rights
EMR-Extra Mural Research
DCC-Drug Control Cell
RTI – Right to Information
R&I – Receipt and Issue
N.O.C.- Nominations of Candidates
IEC-Information Education Communication

***NI - NATIONAL INSTITUTES**

AIIA -ALL INDIA INSTITUTE OF AYURVEDA, New Delhi
NIA- NATIONAL INSTITUTE OF AYURVEDA
RAV-RASHTRIYA AYURVED VIDYAPEETH
IGPTRA-INSTITUTE OF POST GRADUATE TRAINING & RESEARCH IN AYURVEDA
NEIFM-NORTH EASTERN INSTITUTE OF FOLK MEDICINE
NELAH-NORTH EASTERN INSTITUTE OF AYURVEDA AND HOMOEOPATHY
NIS-NATIONAL INSTITUTE OF SIDDHA
NIUM-NATIONAL INSTITUTE OF UNANI MEDICINE
NIH-NATIONALINSTITUTEOF HOMOEOPATHY
MDNIY-MORARJI DESAI NATIONAL INSTITUTE OFYOGA
NIN-NATIONAL INSTITUTE OF NATUROPATHY

****RCS-RESEARCH COUNCILS**

CCRAS-CENTRAL COUNCIL FOR RESEARCH IN AYURVEDIC SCIENCES
CCRH-CENTRAL COUNCIL FOR RESEARCH IN HOMOEOPATHY
CCRUM-CENTRAL COUNCIL FOR RESEARCH IN UNANI MEDICINE
CCRYN-CENTRAL COUNCIL FOR RESEARCH IN YOGA & NATUROPATHY
CCRS-CENTRAL COUNCIL FOR RESEARCH IN SIDDHA

